



**KNT-CT Global Travel Co., Ltd.**

Sumitomo Shoji Kanda-Izumi-cho Bldg. 13F, 1-13 Kanda-Izumi-cho, Chiyoda-ku, Tokyo, 101-0024, Japan  
TEL. +81-3-6891-9200 E-mail. dmcjapan@or.knt.co.jp

<http://www.dmcjapan-knt.com/>

**JAPAN**

# KNT-CT Holdings Co., Ltd.



**We create upgraded, exciting journeys to meet customers' needs by utilizing our extensive experience and achievement.**

Kinki Nippon Tourist throughout Japan, including the major metropolitan areas.



**We provide completely original plans, such as themed and regional travel.**

Club Tourism International Inc.

Profile	
Company name	KNT-CT Holdings Co., Ltd.
Established	May 1947
Memberships	JATA, IATA, PATA, ICCA, Euromic
Certification	Quality Assurance System for Tour Operators Quality Assurance System assessed our quality in three categories—corporate compliance with laws and regulations, service quality and CSR
No. of employees	6,897 (Group total, as of October, 2017)

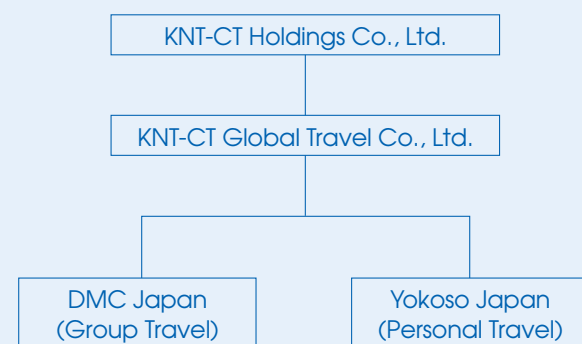


Ever since it was first established, KNT-CT Holdings Co., Ltd. has striven to create value and excitement. A passion for meeting customers' needs and a commitment to continuously persevere, try new things, and think outside the box has remained an integral part of KNT-CT Holdings employees' DNA, despite dramatic changes to the business environment.

The Kinki Nippon Tourist brand has expanded nationwide, with the group travel business responding to every customer need with rich, creative experiences and outstanding performance. Additionally, KNT-CT Holdings' personal travel business offers high-quality products both at our travel branches and online. The company's other brand, Club Tourism, which has grown to be the largest Media Sales Oriented Travel Company in Japan, offers fully original themed travel plans. KNT-CT Holdings is working to maximize the group's comprehensive capabilities with a unique business model which multiplies the brands' individuality and will lead to further improvements in service.

For the upcoming Tokyo 2020 Olympic and Paralympic Games, KNT-CT Holdings will be welcoming visitors from all over the world with 'Omotenashi,' a uniquely Japanese hospitality. As an Official Travel Service Partner, it will show its support for all those involved with perfect preparation and with travel services that are one step ahead. Additionally, KNT-CT Holdings proudly supports all who desire to journey, and strives to realize a society where everyone can enjoy travel.

Going forward, as a trusted and loved partner, everyone at KNT-CT Holdings will continue to strive to meet the challenge of exceeding customers' expectations with the best possible service. KNT-CT Holdings is looking ahead confidently into the future!



Club Tourism was founded in 1980 as a travel-related direct marketing business. Since 1985, Club Tourism has delivered "Tabinotomo" — a magazine presenting a wide range of travel and tourism information — to customers on a monthly basis, introducing travel products tailored to meet different interests and preferences. Today, besides delivering "Tabinotomo" to approximately three million households, Club Tourism also introduces a great many high-value-added travel products to customers through newspaper advertising and through our company's website.

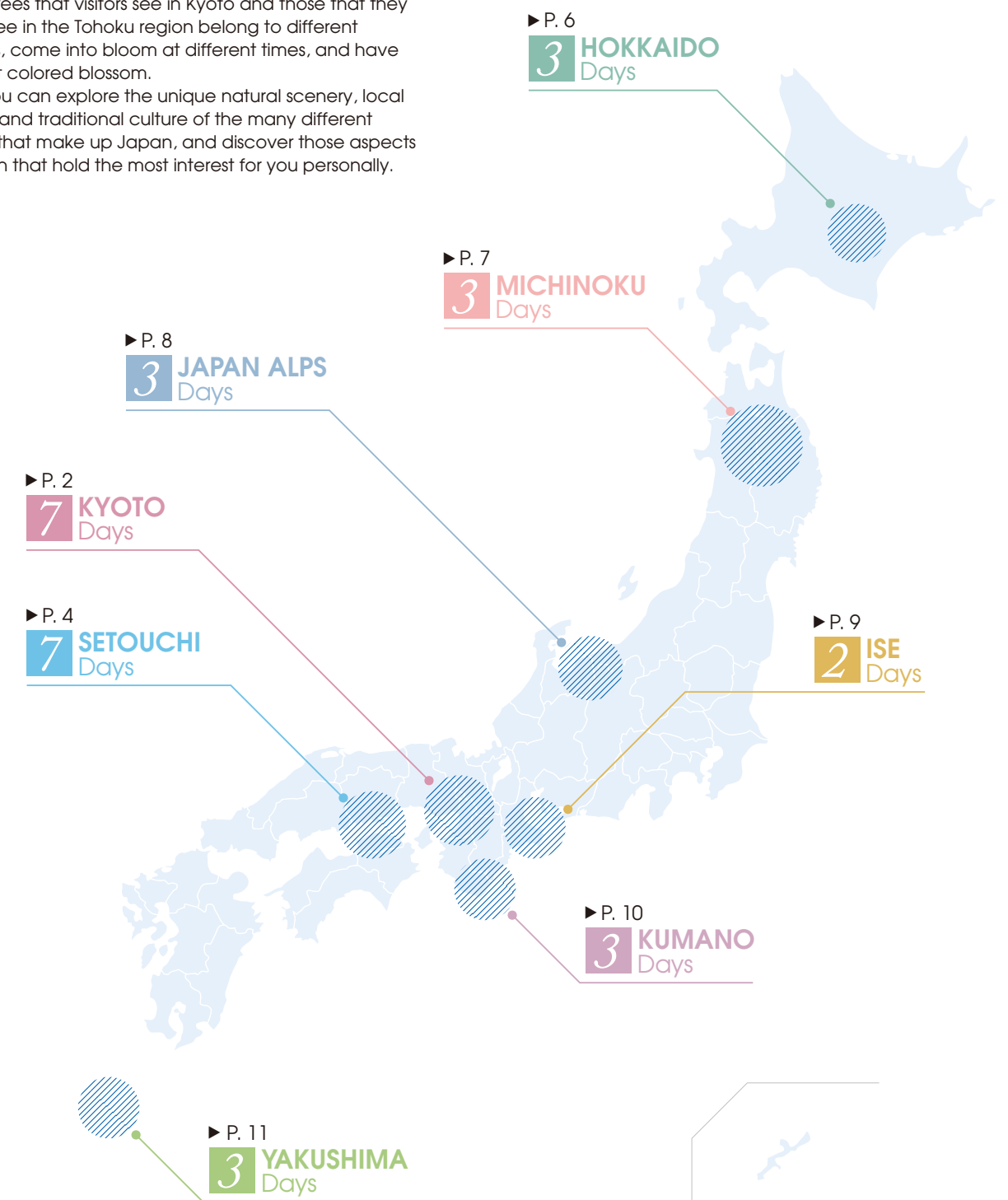
Currently, Club Tourism is mainly oriented towards providing travel-related services for consumers in Japan, but in the future we plan to expand the scope of our service provision, making effective use of our ability to secure the best prices and to develop innovative travel packages, so as to provide the types of distinctive, original tours that can be found in our catalog to overseas customers as well.

There are many first-class tourist attractions in Japan that international tourists are unlikely to be familiar with. We hope to give overseas tourists the chance to see every corner of Japan, and to experience contemporary Japan in new ways. Don't miss this opportunity to find out about exciting new destinations in Japan!

The Japanese archipelago extends over a distance of around 3,500 kilometers, from Hokkaido in the north to Okinawa in the south. Each of the islands that make up Japan has its own unique natural scenery, which changes with the seasons, and its own distinctive culture.

Japan is famous for its cherry blossom, but the cherry trees that visitors see in Kyoto and those that they would see in the Tohoku region belong to different varieties, come into bloom at different times, and have different colored blossom.

You can explore the unique natural scenery, local cuisine, and traditional culture of the many different regions that make up Japan, and discover those aspects of Japan that hold the most interest for you personally.



## Legend

Train
 Bus
 Walking
 Airplane
 Ship
 Narrow-gauge train
 Aerial lift



# Quintessential Kyoto and More



Enjoy a six-night stay in Kyoto in spring, when the cherry blossom is in full bloom! You can walk round the historic streets of Kyoto with a knowledgeable guide, soaking up the city's unique atmosphere at a relaxed pace. This tour also uses Kyoto as a base for day-trips to visit Himeji Castle in Hyogo Prefecture and Tsuyama Castle in Okayama Prefecture, some of the best spots for cherry blossom-viewing. You may choose to participate in the tours offered daily at no extra cost, or just enjoy a relaxing trip at your own speed.

**Day 1 |** Tokyo - 乗 - Shinagawa Station and Shin-Yokohama Station (tour participants can board at either of these stations as an alternative to boarding at Tokyo) - 乗 - ["Nozomi" Shinkansen high-speed train] - 乗 - Kyoto - 歩 - Kyoto (overnight)

\* After arriving at the hotel, tour participants will be briefed about the optional tours.

**Meals:** Breakfast: ✕ Lunch: ✕ Dinner: ○

**Hotel:** Green Rich Hotel Kyoto Eki Minami or similar

**Day 2 |** Kyoto (free at leisure, or participate in the following tour) [Hiking from Keage to the Philosopher's Walk, with a guide; this is an easy hike, covering a distance of around 7km, and taking around 2 hours to complete] Hotel - 歩 - Kyoto - 乗 - Yamashina - 乗 - Keage - 歩 - Keage Incline - 歩 - Nanzen-ji Temple - 歩 - Philosopher's Walk - 歩 - Ginkakuji - 歩 - Kyoto Gyoen National Garden - 歩 - Demachiyanagi - 乗 - [Local bus service] - 乗 - Kyoto - 歩 - Kyoto (overnight)

**Meals:** Breakfast: ○ Lunch: ✕ Dinner: ✕

**Hotel:** Green Rich Hotel Kyoto Eki Minami or similar



Philosopher's Walk

**Day 3 |** Kyoto (free at leisure, or participate in the following tour) [Visiting Amanohashidate and the Takeda Castle site \* This trip involves walking, with a total distance walked of around 6km, taking around 3 hours] Hotel - 乗 - Amanohashidate (one of the "Three Views of Japan") - 乗 - Takeda Castle site (with a guide) - 乗 - Kyoto (overnight)

**Meals:** Breakfast: ○ Lunch: ✕ Dinner: ✕

**Hotel:** Green Rich Hotel Kyoto Eki Minami or similar



Amanohashidate

**Day 4 |** Kyoto (free at leisure, or participate in the following tour) - 乗 - [Visiting two famous castles: Himeji Castle and Tsuyama Castle \* This trip involves walking] Hotel - 乗 - Himeji Castle (World Heritage Site) - 乗 - Okayama: Tsuyama Castle Kakuzan Park - 乗 - Kyoto (overnight)

**Meals:** Breakfast: ○ Lunch: ✕ Dinner: ✕

**Hotel:** Green Rich Hotel Kyoto Eki Minami or similar



Himeji Castle

**Day 5 |** Kyoto (free at leisure, or participate in the following tour) - 歩 - Kyoto (overnight)

**Meals:** Breakfast: ○ Lunch: ✕ Dinner: ✕

**Hotel:** Green Rich Hotel Kyoto Eki Minami or similar

**Day 6 |** Kyoto (free at leisure, or participate in the following tour) [Yoshino "Thousand Cherry Trees" in Nara, and Byodo-in Temple (World Heritage Site) in Kyoto \* These are both easy hikes]

Hotel - 乗 - Yoshino "Thousand Cherry Trees" in Nara - 乗 - Byodo-in Temple (World Heritage Site) in Kyoto - 乗 - Kyoto (overnight)

**Meals:** Breakfast: ○ Lunch: ✕ Dinner: ✕

**Hotel:** Green Rich Hotel Kyoto Eki Minami or similar



Yoshino "Thousand Cherry Trees"

**Day 7 |** Kyoto - 乗 - Ryooan-ji Temple (World Heritage Site) (with the opportunity to view the famous Zen "dry garden") - 乗 - Ninna-ji Temple (World Heritage Site) - 歩 - Haradani-en Garden - 歩 - Ninna-ji Temple - 乗 - Kamigamo-jinja Shrine (World Heritage Site) - 乗 - Kyoto - 乗 - Shin-Yokohama Station and Shinagawa Station (tour participants have the option of getting off at either of these stations, rather than continuing all the way to Tokyo) - 乗 - Tokyo

\* This trip involves walking, with a total distance walked of around 5km, taking around 2 hours.

**Meals:** Breakfast: ○ Lunch: ○ (Boxed lunch) Dinner: ✕



Ryooan-ji Temple

## Recommendations

- Enjoy a six-night stay at a hotel located within easy walking distance of Kyoto Station
- Spend seven days visiting UNESCO World Heritage sites and scenic spots that are famous for their beautiful cherry blossom in Nara, Kyoto, Hyogo Prefecture and Okayama Prefecture

Tour price: JPY 179,000 – JPY 199,000

\* The above price does not include the cost of the English guide.

Departure dates: March 24 or March 31, 2019



Left: The Gion district has atmospheric streets and beautiful cherry trees  
Right: Kyoto's famous Maiko (Apprentice Geisha)





## Island-Hopping and Art



The Seto Inland Sea in western Japan has many small islands that have become a major center for the arts; 14 of the islands have had art-works created and installed on them, giving each island its own unique artistic ambience. A Club Tourism charter boat makes it easy and convenient to visit the islands! You can experience the different art-works on each island while cycling or strolling round.

**Day 1 |** Haneda Airport - ✈️ - Hiroshima Airport - 🚌 - Senko-ji Temple in Onomichi - 🚌 - Fukuyama (overnight)

🍽️ **Meals:** Breakfast: ✕ Lunch: ✕ Dinner: ✕

🏨 **Hotel:** Fukuyama Oriental Hotel

**Day 2 |** Fukuyama - 🚌 - Ikuchijima Island [Cycle around Ikuchijima Island, with its beautiful scenery, while viewing the fascinating art installations that have been created at various spots throughout the island as part of the "Island-wide Art Museum." A support car will be following behind, so people who aren't confident with cycling can still enjoy this tour] - 🚌 - Fukuyama (overnight)

🍽️ **Meals:** Breakfast: ○ Lunch: ○ (Boxed lunch) Dinner: ✕

🏨 **Hotel:** Fukuyama Oriental Hotel

**Day 3 |** Fukuyama - 🚶 - [Free to sightsee on your own: Explore the atmospheric towns of the Seto Inland Sea—including Tomonoura, Takehara, Sasaoka and Onomichi—by yourself] - 🚶 - Fukuyama (overnight)

🍽️ **Meals:** Breakfast: ○ Lunch: ✕ Dinner: ✕

🏨 **Hotel:** Fukuyama Oriental Hotel

**Day 4 |** Fukuyama - 🚌 - Tsuneishi Harbor - 🚢 - Fukuda Harbor on Momoshima Island [Art Base Momoshima is a project that has repurposed an abandoned school to create a "modern art island"; visitors will be shown round by one of the curators] - 🚢 - Tsuneishi Harbor - 🚌 - Ohara Museum of Art [enjoy the opportunity to view a large number of masterpieces of modern Western art] - 🚌 - Shin-Okayama Harbor - 🚢 - Tonosho Harbor - 🚌 - Shodoshima Island (overnight)

🍽️ **Meals:** Breakfast: ○ Lunch: ✕ Dinner: ○

🏨 **Hotel:** Resort Hotel Olivean Shodoshima

### What is Naoshima

The island of Naoshima is located in the beautiful Seto Inland Sea. Historic streets dating from the Edo Period are now adorned with modern art installations, creating magical visual effects; it is as if the whole island had been transformed into an art museum.



Shimanami Kaido Cycling



Onomichi



Ohara Museum of Art

**Day 5 |** Shodoshima Island - 🚌 - Tonosho Harbor - 🚢 - Takamatsu or Uno or Shin-Okayama Harbor - 🚢 - [Celebrate the opening of the Setouchi Triennale 2019! Tour the "art islands" of the Seto Inland Sea on a Club Tourism charter boat!] - 🚢 - Megijima Island - 🚢 - Naoshima Island [Benesse Art Site Naoshima Art House Projects \*Includes tickets for all facilities (except Art House Project Kinza); also includes a guided tour of the Chichu Art Museum] - 🚢 - Ikeda Harbor on Shodoshima Island - 🚌 - Olive Park - 🚌 - Shodoshima Island (overnight)

🍽️ **Meals:** Breakfast: ○ Lunch: ✕ Dinner: ○

🏨 **Hotel:** Resort Hotel Olivean Shodoshima



Olive Park

**Day 6 |** Shodoshima Island - 🚌 - Tonosho Harbor [with an opportunity to view the art-work "Gift of the Sun"] - 🚢 - [charter boat] - 🚢 - Teshima Island [guided tour of the Teshima Art Museum and the Teshima Yokoo House] - 🚢 - Inujima [guided tour of the Inujima Seirenscho Art Museum and Art House Projects] - 🚢 - Takamatsu Harbor - 🚢 - Tonosho Harbor - 🚌 - Shodoshima Island (overnight)

🍽️ **Meals:** Breakfast: ○ Lunch: ○ (Boxed lunch) Dinner: ○

🏨 **Hotel:** Resort Hotel Olivean Shodoshima



Teshima

**Day 7 |** Shodoshima Island - 🚌 - Tonosho Harbor - 🚢 - Takamatsu Harbor - 🚌 - Takamatsu Airport or Okayama Airport - ✈️ - Haneda Airport

🍽️ **Meals:** Breakfast: ○ Lunch: ✕ Dinner: ✕



Shodoshima Island

### Recommendations

- Cycling round the islands while viewing the tranquil waters of the Seto Inland Sea and the beautiful island scenery is sure to leave you feeling refreshed and invigorated

Tour price: JPY 180,000 – JPY 210,000

\* The above price does not include the cost of the English guide.

Departure dates: May 18, 2019



Left: Naoshima Pavilion Owner: Naoshima Town Architect: Sou Fujimoto Architects Photo / Jin Fukuda  
Right: "Red Pumpkin" ©Yayoi Kusama, 2006 Naoshima Miyaura Port Square Photo / Daisuke Aochi



## Hoshino Resorts Stay in Hokkaido



Enjoy a two-night stay at the popular Hoshino Resorts in Hokkaido. At Tomamu, you can experience the spectacular sight of the “sea of clouds” spreading out below you, and at Furano and Biei you can view the extensive flower fields, with their beautiful colors that change with the seasons. With a visit to Asahiyama Zoo included too, this tour is ideal for families.

**Day 1 |** Haneda Airport - ✈️ - New Chitose Airport - 🚗 - Otaru (we will spend 120 minutes in this historic harbor town; you can stroll along the canal, and look round the seafood and confectionery shops, etc.; you can decide yourself what you want for lunch, for example the famous Otaru sushi, etc.) - 🚗 - Asahiyama Zoo - 🚗 - Asahikawa (overnight)

\* We will be staying at the Hoshino Resorts OMO7 Asahikawa, which opened in April 2018. Staying at this hotel—which is designed to provide an in-depth, unforgettable tourist experience, with many playful touches—really enhances the tour! You can enjoy looking round the town of Asahikawa with one of the OMO Rangers, who are expert local guides, and who can introduce you to all the best places to eat.

🍽️ **Meals:** Breakfast: ✕ Lunch: ✕ Dinner: ✕

🏨 **Hotel:** Hoshino Resorts OMO7 Asahikawa



Asahiyama Zoo

**Day 2 |** Asahikawa - 🚗 - Biei and the “Patchwork Road” (enjoy the beautiful scenery of the Biei hills through the bus window) - 🚗 - Shirogane Blue Pond (a mysterious cobalt-blue pond) - 🚗 - Furano (flower fields, with scenery that changes with the seasons) - 🚗 - Tomamu (overnight)

\* We are scheduled to arrive in Tomamu at 16:30. Your hotel is a hotel resort that is set in the midst of marvelous natural scenery. Special features include the “Minamina Beach” indoor wave pool and “Kirin-no-Yu” hot spring baths; use of these is free for hotel guests! For dinner, you will have a 2,500 yen meal coupon that can be used to eat at whichever of the hotel’s restaurants and cafés you prefer.

🍽️ **Meals:** Breakfast: ○ Lunch: ✕ Dinner: ○

🏨 **Hotel:** Hoshino Resorts Tomamu The Tower



Furano

**Day 3 |** Tomamu (in the early morning, you can take the gondola up to the Unkai Terrace, which has spectacular views! Enjoy the “Cloud Pool,” a huge “hammock” in the sky where it feels as though you are floating above the clouds.) - 🚗 - Obihiro and the White Birch Tree Avenue (Tokachi’s most famous scenic spot) - 🚗 - Rokkatei Obihiro Main Store (enjoy confectionery products that are only available here, and which are so exquisitely made that they have to be consumed within three hours) - 🚗 - Ban-ei Horse Ranch Tokachi (view imposing Ban-ei draft horses up close) - 🚗 - Tokachi- Obihiro Airport - ✈️ - Haneda Airport

🍽️ **Meals:** Breakfast: ○ Lunch: ✕ Dinner: ✕



Sea of clouds

### Recommendations

- Spend two nights at the popular Hoshino Resorts. This tour package is very popular; last year, around 1,000 customers chose this package.
- Have a truly magical experience viewing the “sea of clouds” at Hoshino Resorts Tomamu Unkai Terrace!

Tour price: JPY 52,900 – JPY 94,900

\* The above price does not include the cost of the English guide.

Departure dates: From May to late September

## Picturesque Sakura in Tohoku



The Tohoku region in northern Japan has many places that are famous in Japan for their beautiful cherry blossom. With the opportunity to view cherry blossom amidst gorgeous scenery and a historic atmosphere, this is the classic Japan experience. You will also get to visit some “secret” cherry blossom spots that few people know about.

**Day 1 |** Tokyo Station - 🚅 - [“Yamabiko” Shinkansen high-speed train] - 🚅 - Sendai Station - 🚅 - Aobayama Park (this park is famous as a great place to view cherry blossom, with Edo Higan and Yamazakura cherry trees) - 🚗 - Kitakami Tenshochi Park (with its cherry tree lined avenue, this park is ranked as one of the Top 100 best places in Japan to view cherry blossom) - 🚗 - Morioka and the Ishiwarizakura (“Rock-breaking Cherry Tree”) - 🚗 - Grand Farming Koiwai and its “Lone Cherry Tree” - 🚗 - Hachimantai Onsen (hot springs) resort (overnight)

🍽️ **Meals:** Breakfast: ✕ Lunch: ✕ Dinner: ○

🏨 **Hotel:** Hachimantai Mountain Hotel & Spa



Kitakami Tenshochi Park

**Day 2 |** Hachimantai Onsen (hot springs) resort - 🚗 - Hirosaki Park (one of the best places in the Tohoku Region for viewing cherry blossom, with around 2,600 cherry trees in bloom) - 🚗 - The world’s longest cherry tree-lined avenue (“Necklace Road”) - 🚗 - Iwakiyama-jinja Shrine (shrine visit) - 🚗 - Tazawako-kogen Onsen (hot springs) resort (overnight)

🍽️ **Meals:** Breakfast: ○ Lunch: ✕ Dinner: ○

🏨 **Hotel:** Plaza Hotel Sanrokuso or similar



Hirosaki Park

**Day 3 |** Tazawako-kogen Onsen (hot springs) resort - 🚗 - Lake Tazawa - 🚗 - Kakunodate (beautiful cherry trees set against the black walls of the town’s historic houses) - 🚗 - Hiraizumi - 🚗 - Genbi Gorge - 🚗 - Sendai Station - 🚅 - [“Yamabiko” Shinkansen high-speed train] - 🚅 - Tokyo Station

🍽️ **Meals:** Breakfast: ○ Lunch: ✕ Dinner: ✕



Kakunodate

### Recommendations

- In Kakunodate—known as the “Little Kyoto of the Michinoku region” because of its wealth of traditional culture—you can enjoy strolling along streets of historic samurai houses lined with beautiful cherry trees!
- Hirosaki Park is one of the finest places in the Tohoku region for viewing cherry blossom! The Park’s 2,600 exquisitely-cultivated cherry trees provide the perfect setting for Hirosaki Castle!

\*The best time of year for viewing cherry blossom in this region is late April to early May.

Tour price: JPY 47,900 – JPY 84,900

\* The above price does not include the cost of the English guide.

Departure dates: From April to early May



## 3 JAPAN ALPS Days

# Japan Alps amidst the Snow



This tour takes you to the Snow Wall Walk, Kurobe, and Kamikochi, three of Japan's best-loved tourist attractions. The Snow Wall Walk is located in a region that experiences heavy snowfall, and visitors can walk between snow-drifts that are sometimes over 15 meters high; you can also travel through the emerald-green beauty of the Kurobe Gorge on the unique Kurobe Gorge Railway, and view spectacular panoramic vistas of the Japan Alps from Kamikochi. All of these will give you an experience unlike anything you have ever had in Japan.

**Day 1 |** Tokyo - 🚅 - ["Hakutaka" Shinkansen high-speed train] - 🚅 - Kurobe Unazuki Onsen (hot springs) resort - 🚶 - Shin-Kurobe - 🚅 - Toyama Chihou Railway - 🚅 - Unazuki Onsen (hot springs) resort - 🚶 - Unazuki - 🚅 - [Kurobe Gorge Railway] - 🚅 - Kanetsuri (Japan's deepest V-shaped gorge) - 🚅 - Unazuki - 🚶 - Unazuki Onsen (hot springs) resort (overnight)

\* The evening meal is a buffet-style meal featuring local Toyama delicacies such as White Shrimp Kakiage Tempura and Freshwater Trout Sushi, etc. After dinner, you can relax in the resort's famous hot spring baths.

🍽️ **Meals:** Breakfast: ✕ Lunch: ✕ Dinner: ○

🏨 **Hotel:** Unazuki Grand Hotel



Kurobe Gorge Railway

**Day 2 |** Unazuki Onsen (hot springs) resort - 🚌 - Mt. Tateyama - 🚶 - Bijodaira - 🚌 - Murodo (spending 180 minutes here, with a Nature Guide to show you round, for an in-depth Murodo experience; for tours departing up until June 20th, visitors can also see the spectacular "Yuki-no-otani" snow wall, which is only open to visitors at certain times of year) - 🚌 - Daikanbo Peak (enjoy spectacular views from the ropeway) - 🚶 - Kurobedaira - 🚶 - Lake Kurobe - 🚶 - Kurobe Dam (for tours departing from July onwards, visitors can enjoy the spectacular water discharges from the dam, which are provided for the benefit of tourists) - 🚌 - Ogisawa - 🚌 - Kitaazumi-gun (overnight)

🍽️ **Meals:** Breakfast: ○ Lunch: ✕ Dinner: ○

🏨 **Hotel:** Unazuki Grand Hotel or similar

\* The hotel will have a large communal Onsen (hot springs) bath.



"Yuki-no-otani" Snow Wall

**Day 3 |** Kitaazumi-gun - 🚌 - Kamikochi (in the popular Chubu Sangaku National Park; we will be spending 180 minutes here, so there will be plenty of time to look round) - 🚌 - Matsumoto - 🚅 - [Azusa Limited Express] - 🚅 - Hachioji and Tachikawa (tour participants have the option of getting off at either of these stations, rather than continuing all the way to Tokyo) - 🚅 - Shinjuku

🍽️ **Meals:** Breakfast: ○ Lunch: ✕ Dinner: ✕



Kamikochi

### Recommendations

- Only available between mid-April and late June! Experience the spectacular Snow Wall Walk!
- Enjoy traveling on a variety of different modes of transport, including an aerial lift, trolley bus, and cable railway!

Tour price: JPY 49,900 – JPY 99,900 \* The above price does not include the cost of the English guide.

Departure dates: From April to late September \* Snow Wall Walk will open from the middle April to June.

## 2 ISE Days

# Spiritual Crash Course in Ise



The Ise Grand Shrine, located in Ise on the Shima Peninsula, is one of Japan's holiest and most prestigious Shinto shrines. The area where the Shrine is located has been revered as a sacred place since ancient times, and was chosen to host the 42nd G7 Summit in 2016. In this spiritual atmosphere, you can enjoy spectacular views of the ocean and the many islands—both large and small—that dot it, and the imposing scenery of the complex coastline with its many cliffs and inlets.

**Day 1 |** Tokyo Station - 🚅 - ["Kodama" Shinkansen high-speed train] - 🚅 - Toyohashi Station - 🚌 - Futamigaura and Hamasangu (the first stop on the Ise Pilgrimage) - 🚌 - Ise Grand Shrine and Geku (Outer Shrine) - 🚌 - Yokoyama Observation Platform (with superb views of Ago Bay) - 🚌 - Shima (overnight)

🍽️ **Meals:** Breakfast: ✕ Lunch: ○ (Boxed lunch) Dinner: ○

🏨 **Hotel:** Hotel & Resorts ISE-SHIMA



Futamigaura

**Day 2 |** Shima - 🚌 - Ise Grand Shrine and Naiku (Inner Shrine) (in the early morning) - 🚌 - Toba Observation Platform - 🚌 - "Pearl Road" scenic highway - 🚌 - "Iseshima Skyline" scenic highway - 🚌 - Mt. Asama and the Kongosho-ji Temple (the Inner Sanctuary of the Ise Grand Shrine) - 🚌 - Toyohashi Station - 🚅 - ["Kodama" Shinkansen high-speed train (seating in a "Green Car" first-class car)] - 🚅 - Tokyo Station

🍽️ **Meals:** Breakfast: ○ Lunch: ○ Dinner: ✕



Okage Yokocho in Ise

### Recommendations

- Visit Ise-Shima, the beautiful region where the 2016 G7 Summit was held, and stay at the Ise-Shima Onsen (hot springs) resort

Tour price: JPY 39,800 – JPY 72,800

\* The above price does not include the cost of the English guide.

Departure dates: From March to late September

Left: Uji Bridge

Right: Ise Grand Shrine and Naiku (Inner Shrine)





# 3 KUMANO Days

## Mini Pilgrimage in Kumano



The Kumano Kodo pilgrimage routes link the Kumano Sanzan ("Three Grand Shrines of Kumano") in the Kansai region of Japan. In 2004, the Kumano Kodo became the second pilgrimage route in the world to be awarded UNESCO World Heritage status, after the Route of Santiago de Compostela in Spain; the Kumano Kodo has also been awarded three stars in the Michelin Green Guide. Explore this magical place with an expert guide who will lead you along tranquil stone-flagged footpaths through verdant forest.

**Day 1 |** Tokyo - 乗 - ["Hikari" Shinkansen high-speed train] - 乗 - Nagoya Station - 乗 - Kumano Kodo pilgrimage route and Daimonzaka (an ancient, moss-covered footpath) - 乗 - Kumano-nachi-taisha Shrine and Seiganto-ji Temple - 乗 - Nachi-no-taki Waterfall - 乗 - Hashigui-iwa Rock - 乗 - Kushimoto Onsen (hot springs) resort (overnight)

**Meals:** Breakfast: ✕ Lunch: ✕ Dinner: ○

**Hotel:** Hotel & Resorts WAKAYAMA-KUSHIMOTO



Nachi-no-taki Waterfall

**Day 2 |** Kushimoto Onsen (hot springs) resort - 乗 - Cape Shionomisaki (the southernmost point on Honshu, the main island of Japan) === Fudarakusan-ji Temple (there is a special opportunity to view the Buddhist statue that is the main object of worship at the Temple, which is not usually on display to the general public) - 乗 - Kumano (with Kumano Beef for lunch) - 乗 - Kumano Kodo pilgrimage route and the Nakahechi route [Sangen-chaya ("Three Tea-houses") site - 歩 - Observation platform (with superb views looking down from the mountains) - 歩 - Haraido-oji purification site (hiking accompanied by a traditional storyteller; the hike covers a distance of around 2.5km, and takes around 90 minutes) - 歩 - Kumano-hongu-taisha Shrine - 歩 - Oyunohara - 乗 - Kumano Kodo Information Centre (learn about the history of the Kumano Kodo pilgrimage route) - 歩 - Takijiri-oji Shrine] - 乗 - Kishu Minabe Senrihama Onsen (hot springs) resort (overnight)

**Meals:** Breakfast: ○ Lunch: ○ Dinner: ○

**Hotel:** Hotel & Resorts WAKAYAMA-MINABE



Kumano-hongu-taisha Shrine

**Day 3 |** Kishu Minabe Senrihama Onsen (hot springs) resort - 乗 - Tokei-jinja Shrine (which celebrates the 1,600th anniversary of its founding this year) - 乗 - Kumano Hayatama Taisha Shrine - 乗 - Shichiri Mihama Beach (Kumano Kodo pilgrimage route and Hamasando approach path) - 歩 - Hana-no-iwaya-jinja Shrine - 乗 - Onigajo - 乗 - Mikawa-Anjo Station - 乗 - ["Kodama" Shinkansen high-speed train] - 乗 - Tokyo Station

**Meals:** Breakfast: ○ Lunch: ✕ Dinner: ✕



Kumano Kodo pilgrimage route

### Recommendations

- Explore the Kumano Kodo pilgrimage route—with its beautiful mountain and ocean scenery, and its atmospheric stone-flagged footpaths—accompanied by a traditional storyteller

\* The storyteller will accompany you for 90 minutes on a roughly 2.5-km section of the Nakahechi Route section of the Kumano Kodo.

\* Japanese only

Tour price: JPY 65,900 – JPY 99,900

\* The above price does not include the cost of the English guide.

Departure dates: From March to late October

# 3 YAKUSHIMA Days

## Nature Appreciation in Yakushima



Yakushima Island is a small island located between Honshu (the main island of Japan) and Okinawa. 90 percent of the Island is covered with forest, which includes groves of Yakushima Cedar trees, some of which are over 3,000 years old. This unique natural environment was awarded UNESCO Natural World Heritage status in 1993. Explore Yakushima Island in the most convenient way on a tour that take you round the Island by bus, while also incorporating some short hikes.

**Day 1 |** Haneda Airport - 乗 - Kagoshima Airport - 乗 - Kagoshima – Minami Futo (South Pier) - 乗 - [high-speed ferry journey lasting approximately 110 minutes] - 乗 - Yakushima Island - Miyanoura Harbor - 歩 - Yakushima Environmental and Cultural Village Center (with displays where visitors can learn about Yakushima) - 歩 - Yakushima-cho (overnight)

**Meals:** Breakfast: ✕ Lunch: ✕ Dinner: ○

**Hotel:** Seaside Hotel Yakushima or similar



Ancient Yakushima Cedar tree

**Day 2 |** Yakushima-cho - 乗 - Senpiro-no-taki Waterfall - 乗 - Nakama Gajumaru banyan tree - 乗 - Oko-no-taki Waterfall - 乗 - Seibu Rindo Road (within the World Heritage Site) - 乗 - Nagata Inakahama beach - 乗 - Yakushima Tourism Center - 乗 - Shiratani Unsui Gorge (Mini-hike with a guide) - 乗 - Yakushima-cho (overnight)

\* The mini-hike in Shiratani Unsui Gorge lasts around 60 minutes, and covers a distance of around 2km.

**Meals:** Breakfast: ○ Lunch: ○ Dinner: ○

**Hotel:** Seaside Hotel Yakushima or similar



Shiratani Unsui Gorge

**Day 3 |** Yakushima-cho - 乗 - Kigensugi Cedar tree (a Yakushima Cedar tree that is estimated to be over 3,000 years old) - 乗 - Yakusugi Land (stroll through beautiful forest and gorges with a guide; no extra charge for admission) - 乗 - Sugisho - 乗 - Yakushima Island - Anbo Harbor - 歩 - [high-speed ferry journey lasting approximately 120 minutes] - 乗 - Kagoshima - Minami Futo (South Pier) - 乗 - Shiroyama Observation Platform (with marvelous views of the Sakurajima volcano) - 乗 - Shochu distillery (with tasting) - 乗 - Kagoshima Airport - 乗 - Haneda Airport

**Meals:** Breakfast: ○ Lunch: ✕ Dinner: ✕



Senpiro-no-taki Waterfall

### Recommendations

- The island of Yakushima has a wealth of pristine natural scenery, and has been designated a UNESCO World Heritage site because of its ecological richness. On this tour, you will be able to get the most out of your stay on the island by exploring it by mini-bus and short hikes.

- Experience for yourself this mysterious island, with its ancient Yakushima Cedar trees, some of which have been growing in Yakushima's verdant natural environment for over 3,000 years, spectacular gorges, and much more!

Tour price: JPY 89,900 – JPY 184,900

\* The above price does not include the cost of the English guide.

Departure dates: From March to late September



## Konnichiwa Japan

9 NIGHTS 10 DAYS, 5 CITIES



- Day 1** **Arrival in Tokyo**  
Arrive at Narita / Haneda International Airport  
Transfer to hotel in Tokyo  
*Accommodations* Standard: Hotel Monterey Hanzomon or similar  
Superior: Grand Nikko Tokyo Daiba or similar
- Day 2** **Tokyo**  
Sightseeing in Tokyo, visiting Imperial Palace, Meiji Jingu Shrine, Omotesando avenue, Asakusa Kannon Temple, Nakamise Street, and Tokyo Tower  
*Accommodations* Standard: Hotel Monterey Hanzomon or similar  
Superior: Grand Nikko Tokyo Daiba or similar
- Day 3** **Tokyo**  
Free for your own activity  
*Accommodations* Standard: Hotel Monterey Hanzomon or similar  
Superior: Grand Nikko Tokyo Daiba or similar
- Day 4** **Tokyo – Kawaguchiko**  
Transfer to Fuji Five Lake area, visiting Kawaguchiko Lake, Kachikachiyama Ropeway, Saiko Iyashi no Sato Historical Village, and Oshino Hakkaei [Great Mt. Fuji View]  
*Accommodations* Standard: Fuji Premium Resort or similar  
Superior: Hotel Regina Kawaguchiko or similar
- Day 5** **Kawaguchiko – Mt. Fuji – Kyoto**  
Sightseeing in Mt. Fuji area, visiting Mt. Fuji 5th Station  
Transfer to Kyoto by Shinkansen  
*Accommodations* Standard: Kyoto Tower Hotel or similar  
Superior: Kyoto Century Hotel or similar
- Day 6** **Kyoto**  
Sightseeing in Kyoto, visiting Kinkakuji Temple, Kiyomizu Temple, Ninenzaka, Sannen-zaka, Tea Ceremony Experience (at Daitokuji Zuiho-in or similar), and Fushimi Inari  
*Accommodations* Standard: Kyoto Tower Hotel or similar  
Superior: Kyoto Century Hotel or similar
- Day 7** **Kyoto**  
Free for your own activity  
*Accommodations* Standard: Kyoto Tower Hotel or similar  
Superior: Kyoto Century Hotel or similar

- Day 8** **Kyoto – Miyajima – Hiroshima**  
Transfer to Hiroshima by Shinkansen  
Sightseeing in Hiroshima & Miyajima, visiting Itsukushima Shrine, Peace Memorial Park / Museum, and A-Bomb Dome  
*Accommodations* Standard: Grand Hiroshima Intelligent Hotel or similar  
Superior: Rihga Royal Hotel Hiroshima
- Day 9** **Hiroshima – Osaka**  
Transfer to Osaka by Shinkansen  
Sightseeing in Osaka, visiting Kuromon Ichiba, and Dotonbori / Namba area  
*Accommodations* Standard: Hearton Hotel Nishi-Umeda or similar  
Superior: Hotel Monterey Gransmere Osaka or similar
- Day 10** **Departure from Osaka**  
Transfer to Kansai International Airport



Top: Mt. Fuji  
Middle: Kiyomizu Temple  
Bottom: Miyajima

## Japan's Omotenashi

11 NIGHTS 12 DAYS, 5 CITIES



- Day 1** **Arrival in Tokyo**  
Arrive at Narita / Haneda International Airport  
Transfer to hotel in Tokyo  
*Accommodations* Standard: Hotel Monterey Ginza or similar  
Superior: Grand Nikko Tokyo Daiba or similar
- Day 2** **Tokyo**  
Sightseeing in Tokyo, visiting Imperial Palace, Meiji Jingu Shrine, Omotesando avenue, Asakusa Kannon Temple, Nakamise Street, and Tokyo Tower  
*Accommodations* Standard: Hotel Monterey Ginza or similar  
Superior: Grand Nikko Tokyo Daiba or similar
- Day 3** **Tokyo**  
Free for your own activity  
*Accommodations* Standard: Hotel Monterey Ginza or similar  
Superior: Grand Nikko Tokyo Daiba or similar
- Day 4** **Tokyo – Kawaguchiko**  
Transfer to Fuji Five Lake area, visiting Kawaguchiko Lake, Kachikachiyama Ropeway, Saiko Iyashi no Sato Historical Village, and Oshino Hakkaei [Great Mt. Fuji View]  
*Accommodations* Standard: Fuji Premium Resort or similar  
Superior: Hotel Regina Kawaguchiko or similar
- Day 5** **Kawaguchiko – Mt. Fuji – Takayama**  
Sightseeing in Mt. Fuji area, visiting Mt. Fuji 5th Station  
Transfer to Takayama by Shinkansen and express train  
*Accommodations* Standard: Hotaka-so Sangetsu or similar  
Superior: Shin Hotaka Onsen Yamano Hotel or similar
- Day 6** **Takayama – Shirakawago – Kanazawa**  
Sightseeing in Takayama, visiting Takayama Jinya, Sanmachi-suji street, Kusakabe Folk Museum, Kanda House, and Toyama House  
*Accommodations* Standard: Mitsui Garden Hotel Kanazawa or similar  
Superior: Hotel Nikko Kanazawa or similar
- Day 7** **Kanazawa**  
Sightseeing in Kanazawa, visiting Kenrokuen Garden, Nagamachi Samurai House, Ohi Pottery Museum, Higashi chayagai, and Ochaya Shima  
*Accommodations* Standard: Mitsui Garden Hotel Kanazawa or similar  
Superior: Hotel Nikko Kanazawa or similar

- Day 8** **Kanazawa – Kyoto**  
Transfer to Kyoto by express train  
*Accommodations* Standard: Kyoto Tower Hotel or similar  
Superior: Kyoto Century Hotel or similar
- Day 9** **Kyoto**  
Sightseeing in Kyoto, visiting Kinkakuji Temple, Kiyomizu Temple, Ninenzaka, Sannen-zaka, Tea Ceremony Experience (at Daitokuji Zuiho-in or similar), and Fushimi Inari  
*Accommodations* Standard: Kyoto Tower Hotel or similar  
Superior: Kyoto Century Hotel or similar
- Day 10** **Kyoto**  
Sightseeing in Kyoto, visiting Zazen Experience at Tenryuji or the similar, Arashiyama [Bamboo Forest], and Nijo Castle  
*Accommodations* Standard: Kyoto Tower Hotel or similar  
Superior: Kyoto Century Hotel or similar
- Day 11** **Kyoto**  
Free for your own activity  
*Accommodations* Standard: Kyoto Tower Hotel or similar  
Superior: Kyoto Century Hotel or similar
- Day 12** **Kyoto - Kansai Airport**  
Transfer to Kansai International Airport



Top: Kinkakuji Temple  
Bottom: Takayama

